



By the Waters Edge

A solo exhibition of landscape paintings
by
Stuart James Fraser

2nd - 16th July 2022 - Castle Framing and Gallery
Front St - Bampton - CA8 1NG

About:

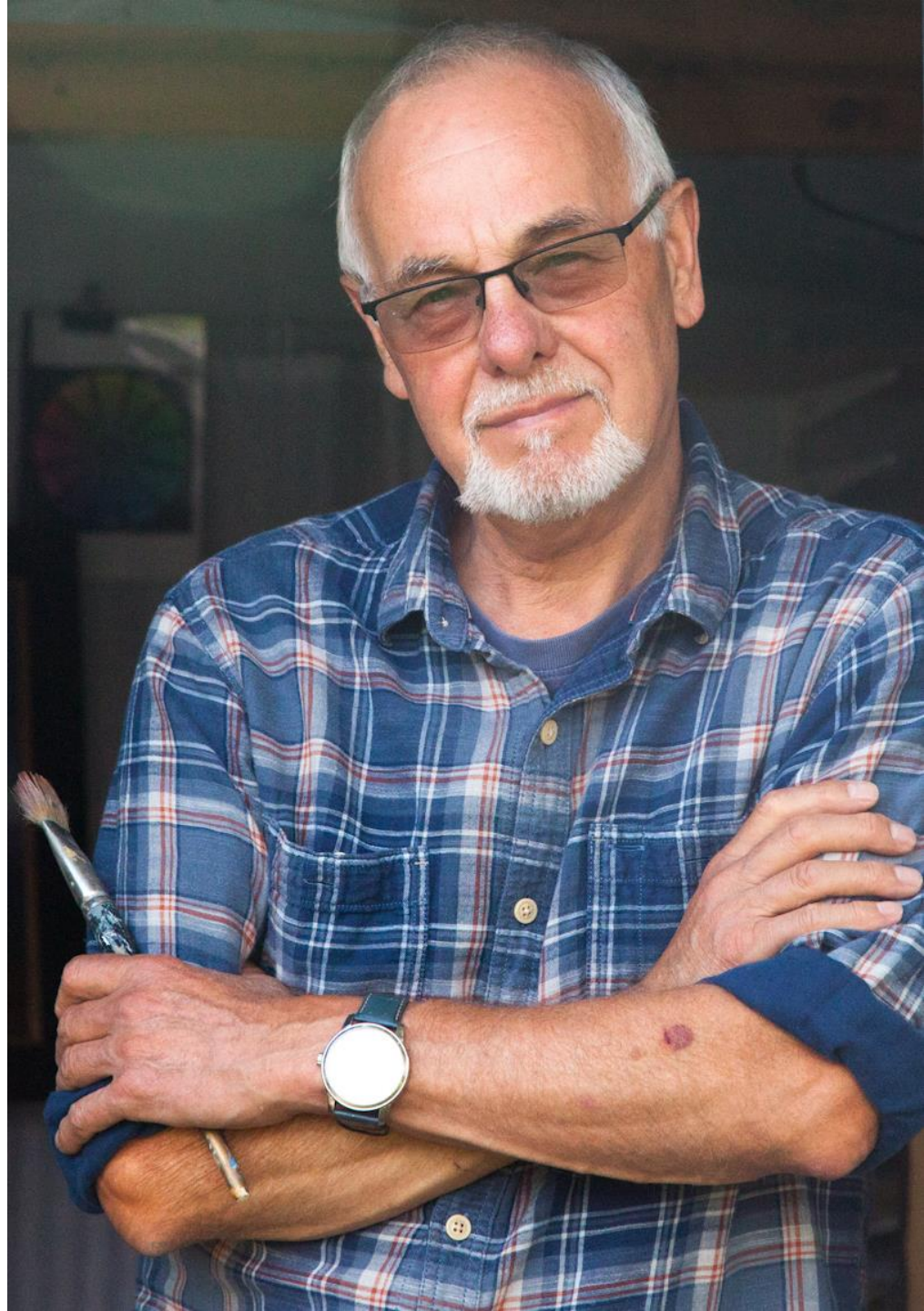
Stuart Fraser is a Cumbrian landscape artist, based at his home studio at Great Corby in the lovely Eden Valley. Inspiration is everywhere, particularly the marshes, fells, lakes and mountains of his beloved Cumbria.

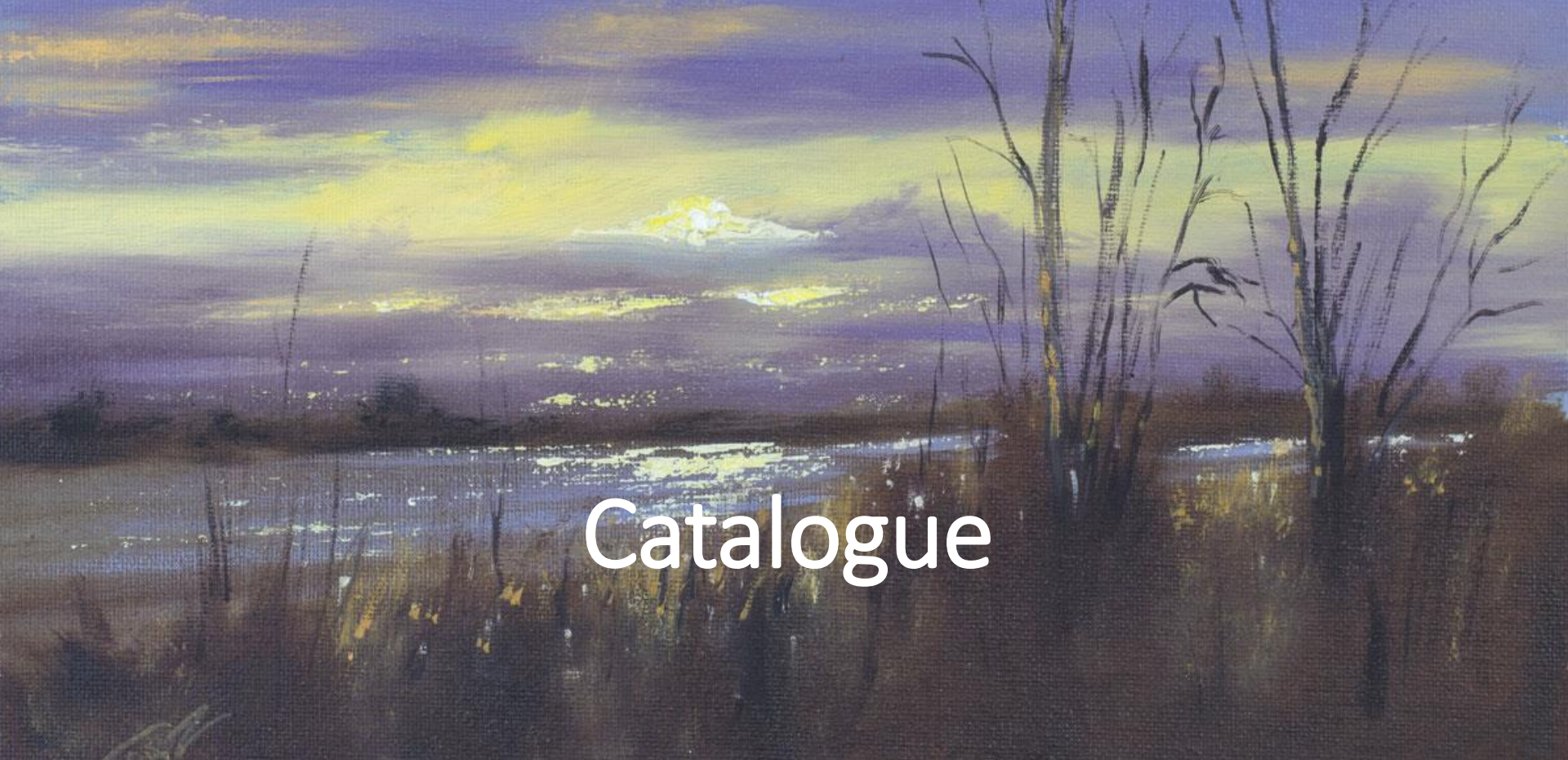
Stuart describes himself as “simply” an old fashioned landscape painter. His work reflects the landscape that inspires him but is never a slavish copy, he encourages the viewer to observe his landscapes with some imagination, looking beyond what we commonly see and know to the sublime we are fleetingly but gratefully offered.

Painting for Stuart is about finding “magic moments” they provide the strong plays of shadow and light that demand Stuart must pick up his brushes.

Employing extensive painting methods: brush and ragging out, layering and glazing, adding texture with impasto paint via scrapers, palette knife and scratching in with a variety of tools to achieve the results he looks for;

Stuart paints under his childhood nickname and to learn more visit. www.frazart.co.uk





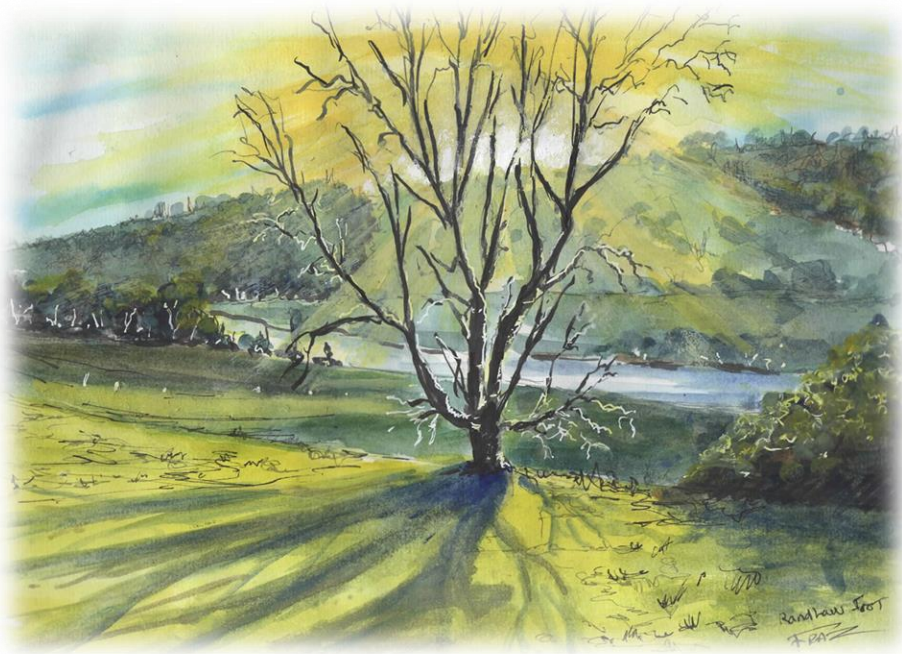
Catalogue

Water is vital to human life, to quote W.H Auden:

"Thousands have lived without love, not one without water"

Artistically, water takes on another quality, It's capacity to bounce, illuminate and reflect, provides the strong plays of light and shade I desire in my work.

Water has always featured extensively in my landscapes and the following collection, some old favourites but many new, never exhibited before works, highlight my love of coast, river and loch.



*From the Sketchbook:
Long autumn shadows on the River Eden near my Village*

Cumbria:

My Cumbria is abundant with coast, lake and streams. Living as I do, on top of a gorge above the mighty River Eden, in a valley whose entire length is designated an area of outstanding natural beauty, ensures Inspiration is always at hand.



Breaking light at Pooley Bridge: 50 x 50 inches - Oils on canvas:



Catching the light at Port Carlisle – Solway Firth: 48 x 48 inches - Oils on canvas:



Reflections near Drumburgh – Solway Firth:
24 x 16 inches - Oils on Wood Panel:



The Beach at Maryport – Solway Firth:
24 x 12 inches - Oils on Wood Panel:



Ullswater from Gowbarrow Fell:
24 x 20 inches - Oils on Wood Panel:



Low winter sun on the Gelt:
40 x 30 inches - Oils on Canvas:



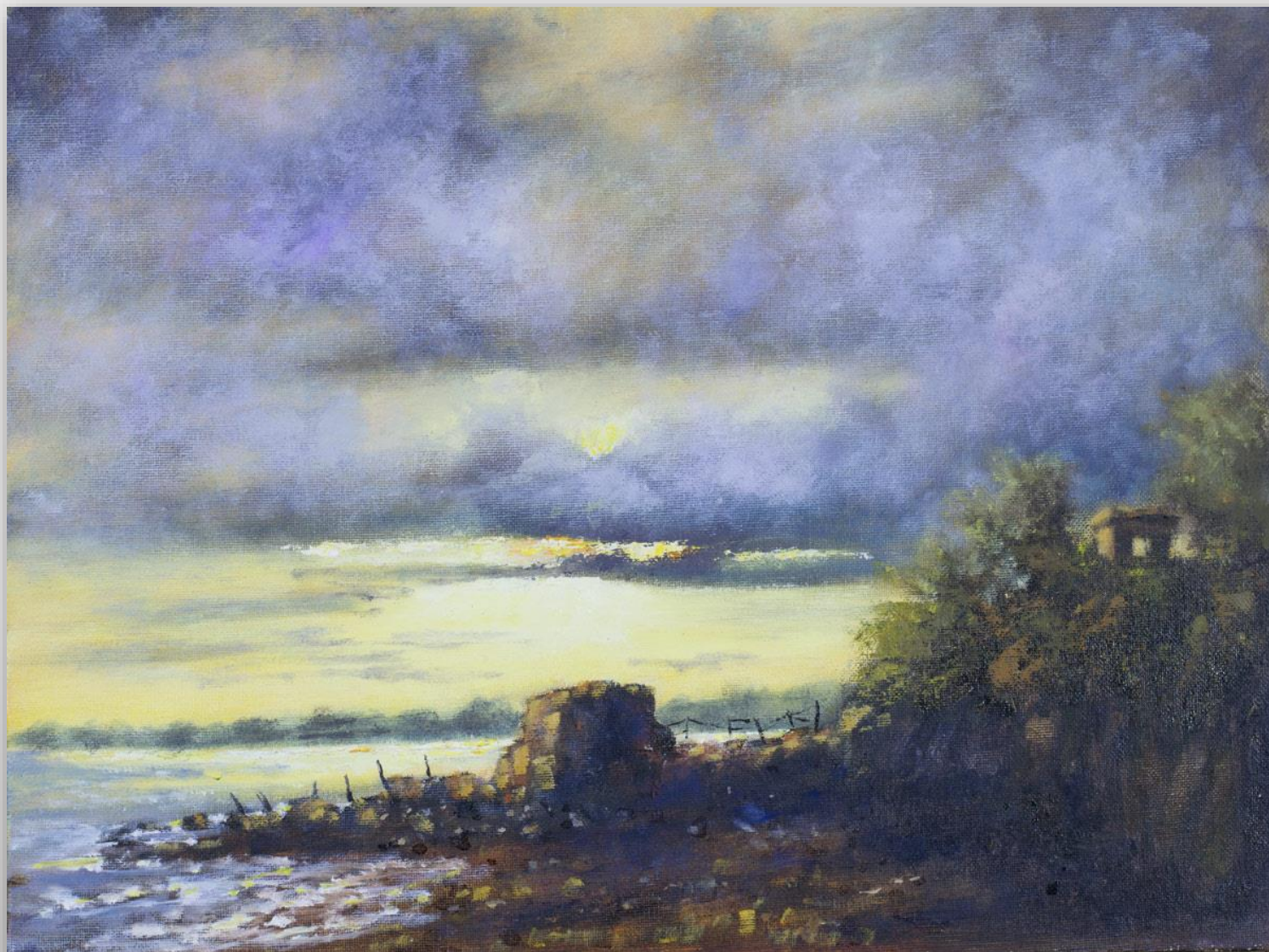
Golden Light on Ullswater:
30 x 12 inches - Oils on Canvas:



Sand Dunes at West Beach, Silloth: - 24 x 24 inches - Oils on Wood Panel:



Crazy light over Port Carlisle, Solway Firth:
16 x 12 inches - Oils on Canvas Panel:



Early Light, Solway Firth:
16 x 12 inches - Oils on Canvas Panel:



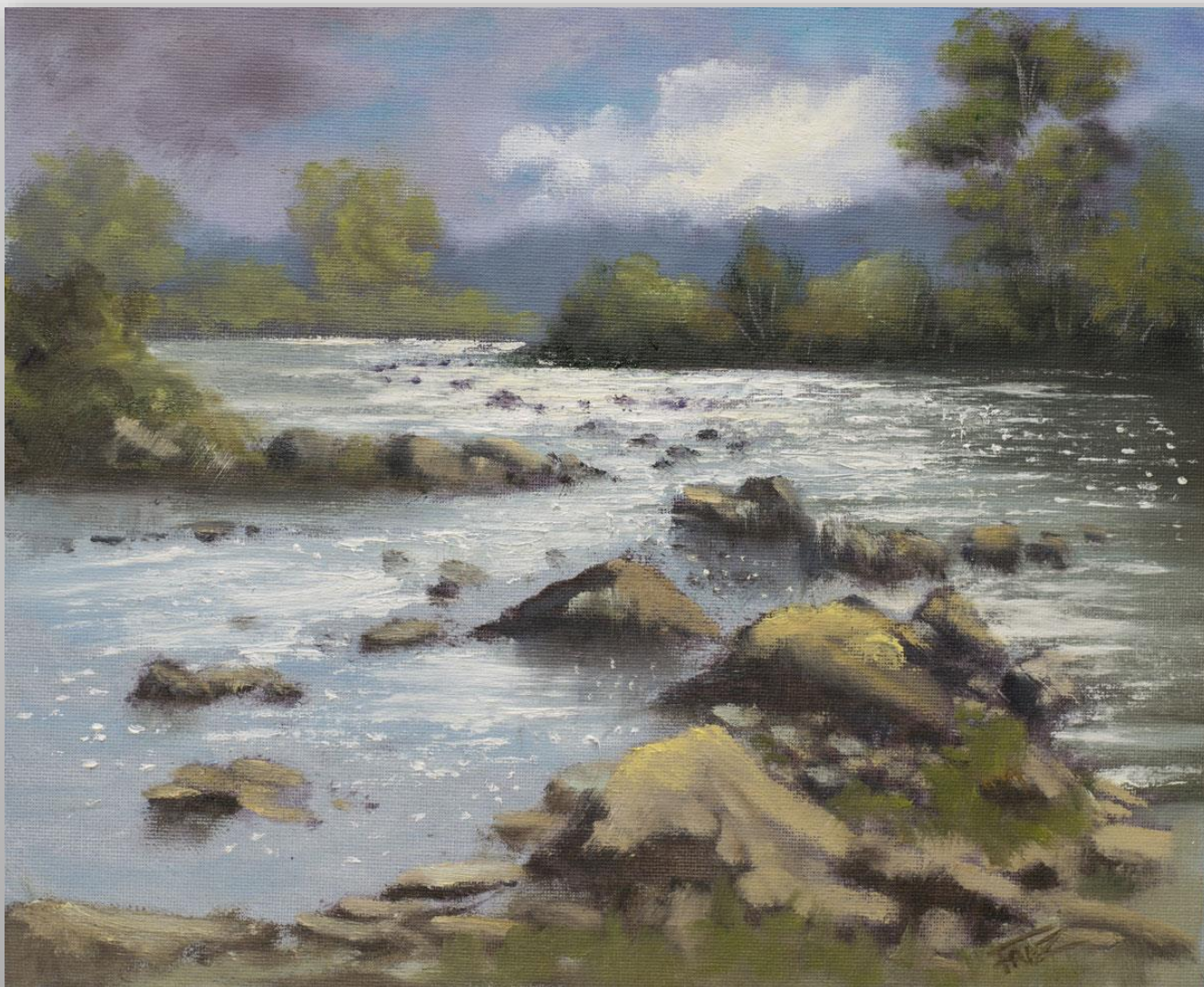
Sun and heavy showers at Rockcliffe near Carlisle:
20 x 16 inches - Oils on Canvas :



Misty Morning at Maryport Harbour :
16 x 12 inches - Oils on Wood Panel:



Maryport Harbour at low tide:
16 x 12 inches - Oils on Wood Panel:



Dancing Light River Eden:
16 x 12 inches - Oils on Wood Panel:



*From the Sketchbook:
Staites Beck from the footbridge – North Yorkshire*

Further afield:

Planet earth provides us with an incredible variety of astonishing landscapes, offering a multitude of locations and opportunities for the artist. Alas a lifetime is not enough to record even a tiny part of it.



After the Rain: Staithes - North Yorkshire :
48 x 20 inches - Oils on Canvas :



The footpath to Port Mulgrave, - North Yorkshire :
24 x 20 inches - Oils on Wood Panel:



Windy Day at Saltburn By The Sea - North Yorkshire :
20 x 12 inches - Oils on Wood Panel:



Runswick Bay – North Yorkshire:
20 x 12 inches - Oils on Wood Panel:



Changing Skies – Sanday - Orkney Isles:
20 x 12 inches - Oils on Wood Panel:



Beach huts at Wells Next the Sea - Norfolk:
24 x 16 inches - Oils on Wood Panel:



Mussel Shacks near La Rochelle - France
24 x 20 inches - Oils on Wood Panel:



Safe Harbour at Mersea Island - Essex
24 x 20 inches - Oils on Wood Panel:



About: Castle Framing and Gallery

Promoting Local Artists

Michael the driving force behind Castle Framing and Gallery, strongly believes that a gallery living and working locally, should by default showcase and promote local art and artists.

As one of the few remaining independent galleries in the Carlisle region, Michael offers opportunity for artists to frame their work, exhibit or even become part of their online e-commerce facility

"We love art and are always looking to grow the number of local artists we promote. As art is so individual their possibilities are massive and we hope to help local artists whilst building a solid reputation for providing high quality local work to both visitors and the local market."

Services

We offer a full picture framing service with all the work carried out in our specialised workshop in Brampton, overseen by our Guild commended framer and staff trained by him.

As well as promotion of local art we also offer a wide range of quality art prints from some of the most well known artists nationally, and can usually source for you any image you would like.

If you would like to enquire about the availability of any originals from any of our artists, please contact us.



Michael with 2 of Stuarts paintings



Castle Framing

20-22 Front St, Brampton CA8 1NG

info@castle-picture-framing.co.uk
<https://www.castle-picture-framing.co.uk/>
<https://www.instagram.com/castleframing>



LANDSCAPES 5'
light and shadow

www.frazart.co.uk
[Facebook @FrazCumbria](#)
[Instagram: fraz_landscapePainter](#)